



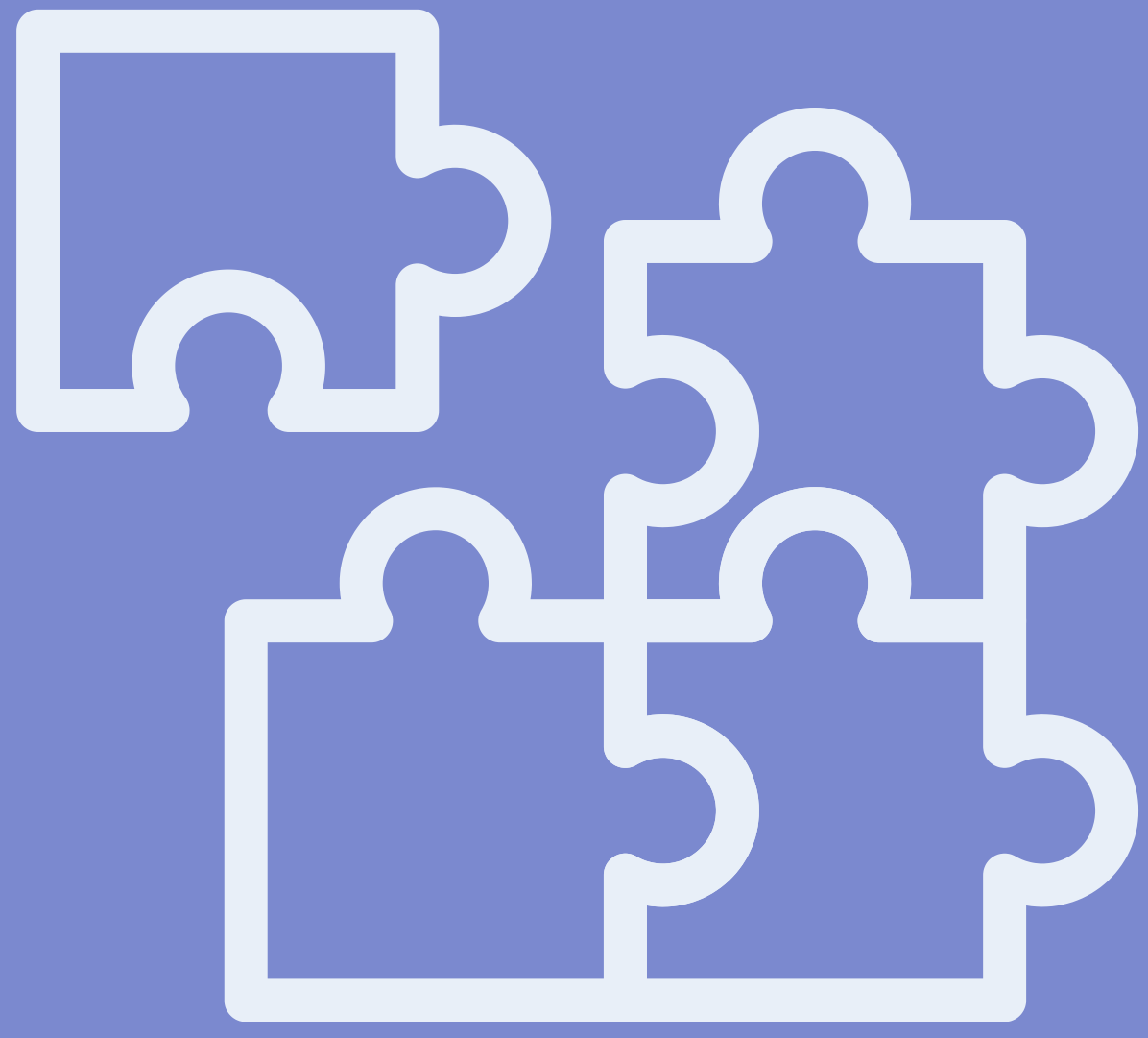
# Hillside Shared Read Cycle

## Year 2



1

### Focus skill



Skill-based session looking at a focus domain. Modelled teaching of domain using text with practice activities linked to skill.

2

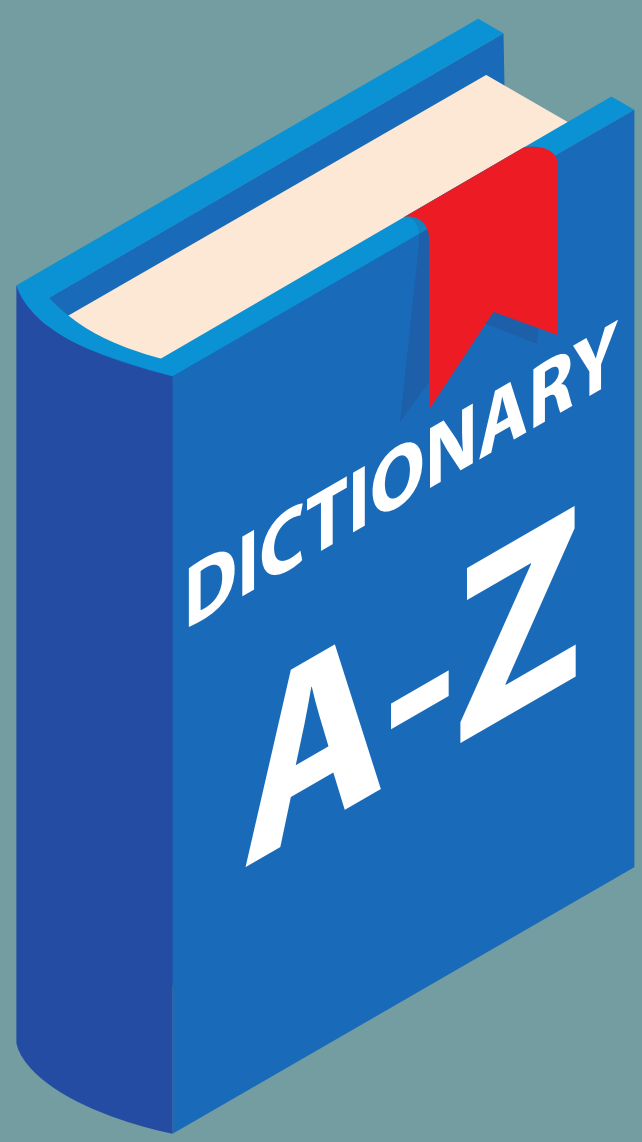
### New Text



Class immersion into new focus text, with explicit emphasis on developing fluency. Identify unfamiliar vocabulary discovered when reading.

3

### Vocabulary defining



Explore identified unfamiliar vocabulary from session 1, defining the meaning of each word. Discuss how this provides meaning in text

4

### Group comprehension



Guided session looking at how to tackle different comprehension questions covering a range of skills.

5

### Assessment



Provide pupils with opportunity to apply all of the reading skills covered independently within a previously unseen text.

6

### Feedback and review



Revisit and review pupils' answers to assessment task, looking at proficiency and strategies used for finding answers to questions.



# Hillside KS2 Shared Read Cycle

## Lower KS2



1

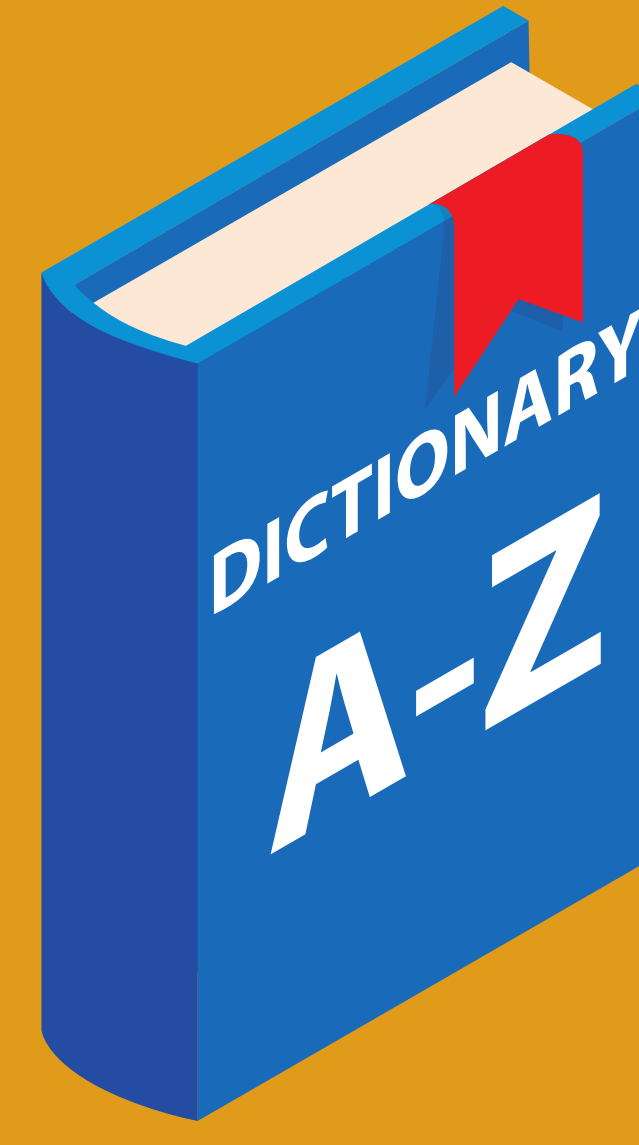
### New Text



Class immersion into new focus text, with explicit emphasis on developing fluency. Identify unfamiliar vocabulary discovered when reading.

2

### Vocabulary defining



Explore identified unfamiliar vocabulary from session 1, defining the meaning of each word. Discuss how this provides meaning in text

3

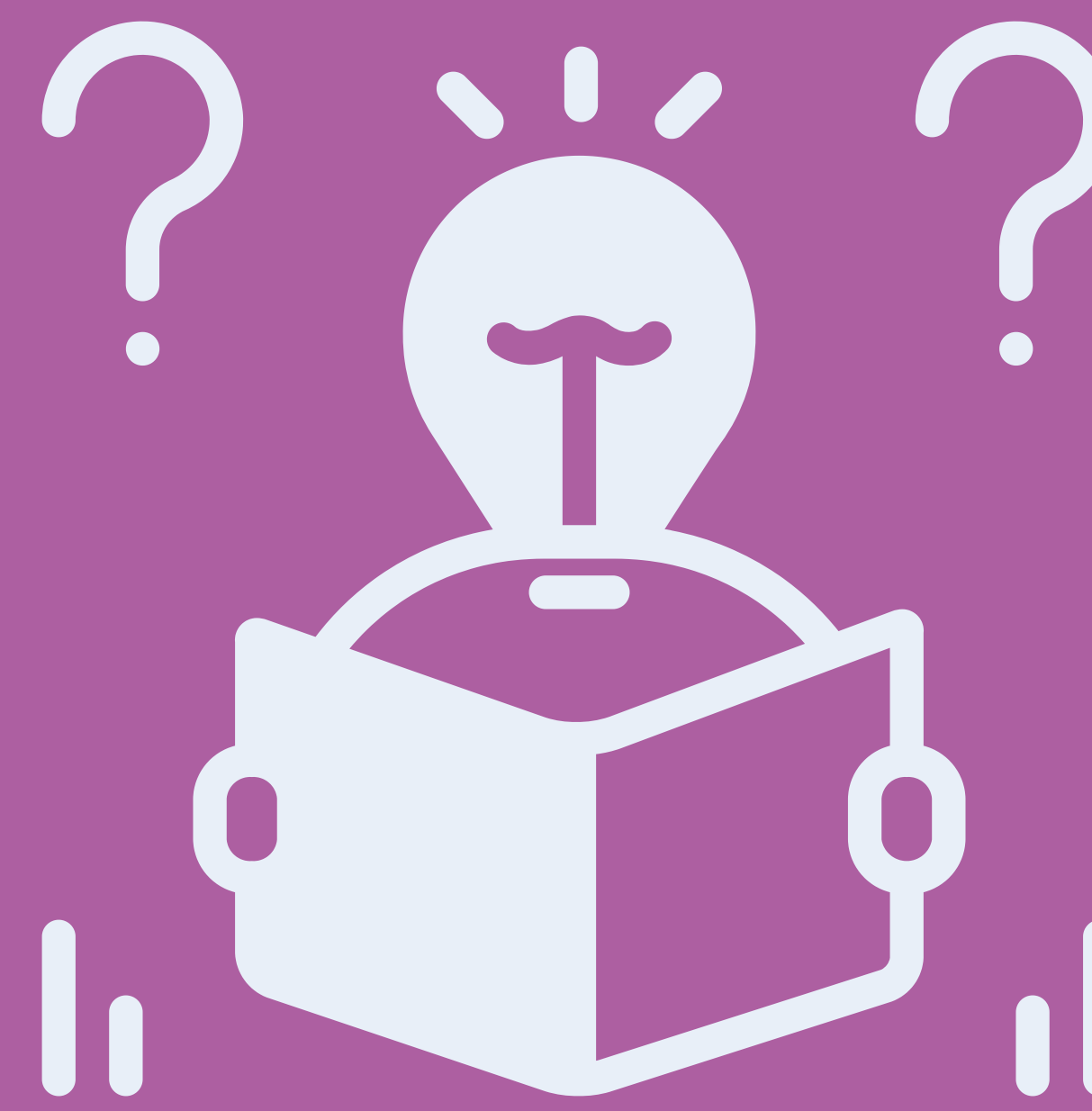
### Retrieval



Drawing out key information from within the text to support comprehension.

4

### Inference



Developing pupils' ability to infer meaning about characters, events and information using evidence to support ideas.

5

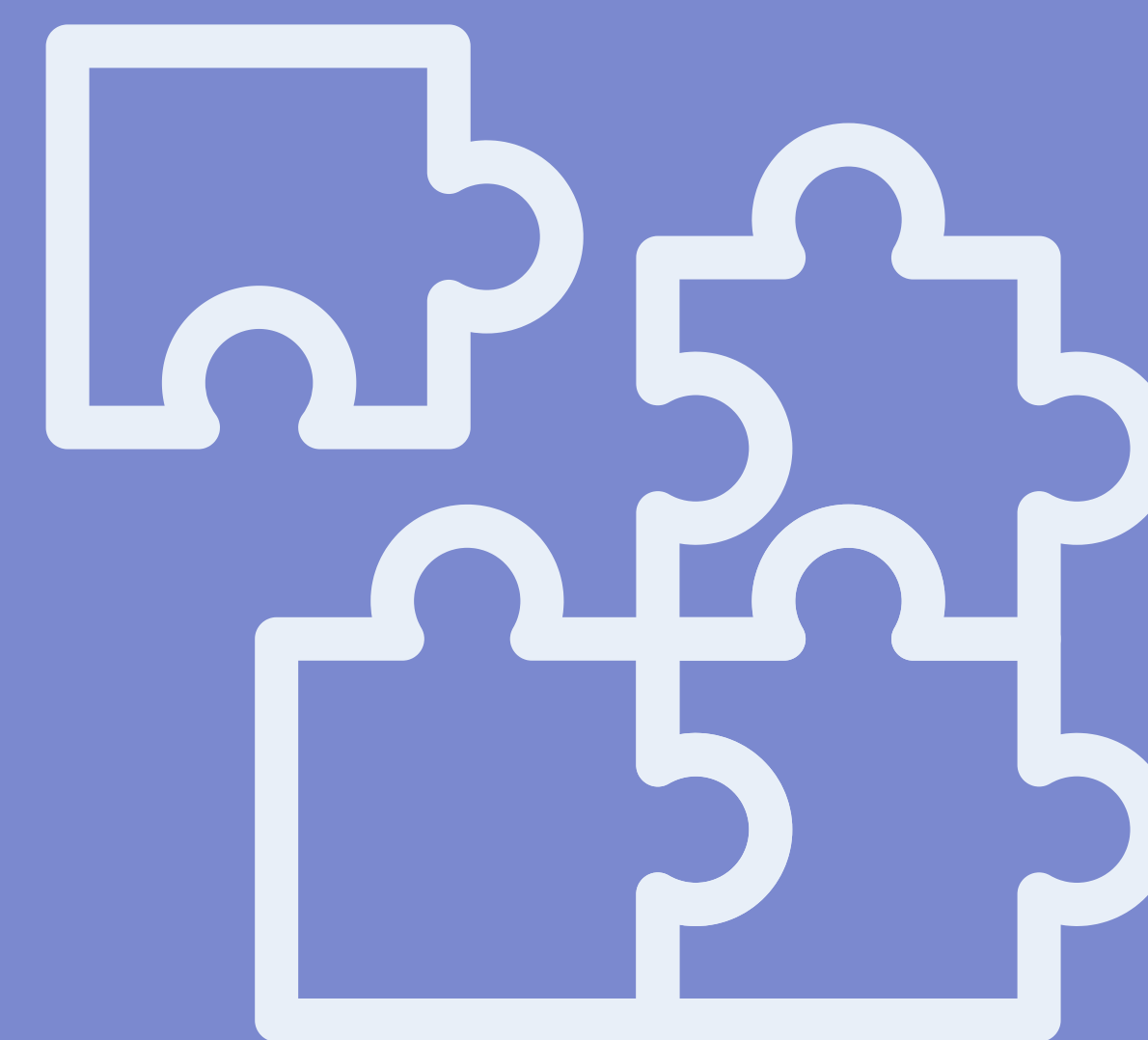
### Word meaning in context



Using context clues from the text to establish the meaning of specific words and phrases.

6

### Focus skill



Developing an additional key reading skill within each cycle - prediction, summarising, authorial impact, comparing and contrasting.

7

### Assessment



Provide pupils with opportunity to apply all of the reading skills covered within a previously unseen text. Feedback and review in second session to assess proficiency, accuracy and next steps.



# Hillside KS2 Shared Read Cycle

## Upper KS2



1

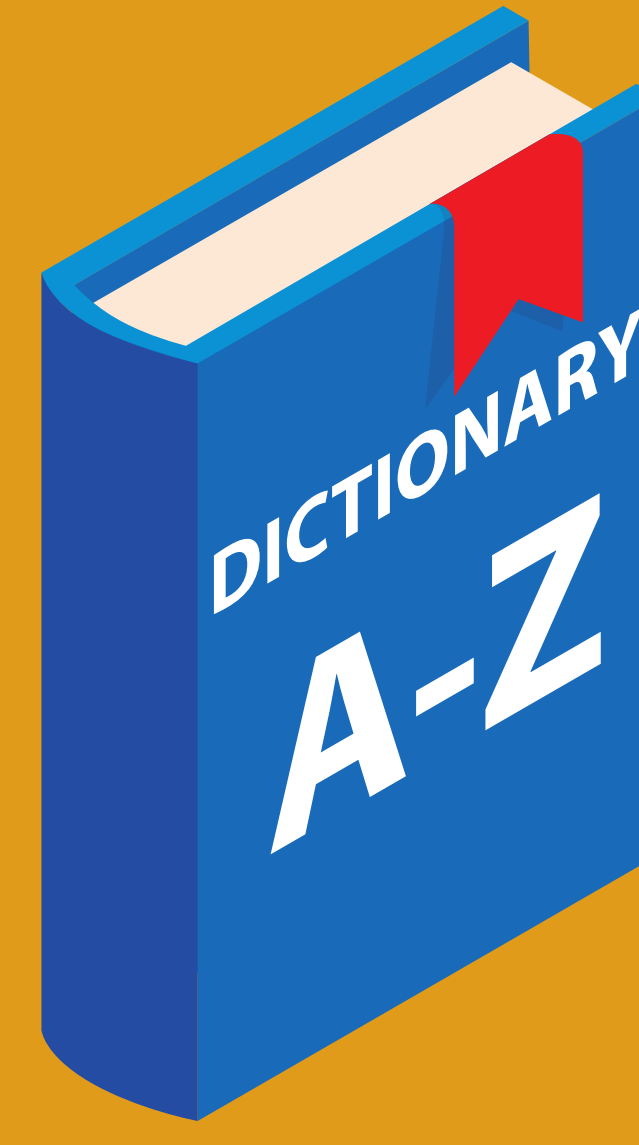
### New Text



Class immersion into new focus text, with explicit emphasis on developing fluency. Identify unfamiliar vocabulary discovered when reading.

2

### Vocabulary defining



Explore identified unfamiliar vocabulary from session 1, defining the meaning of each word. Discuss how this provides meaning in text

3

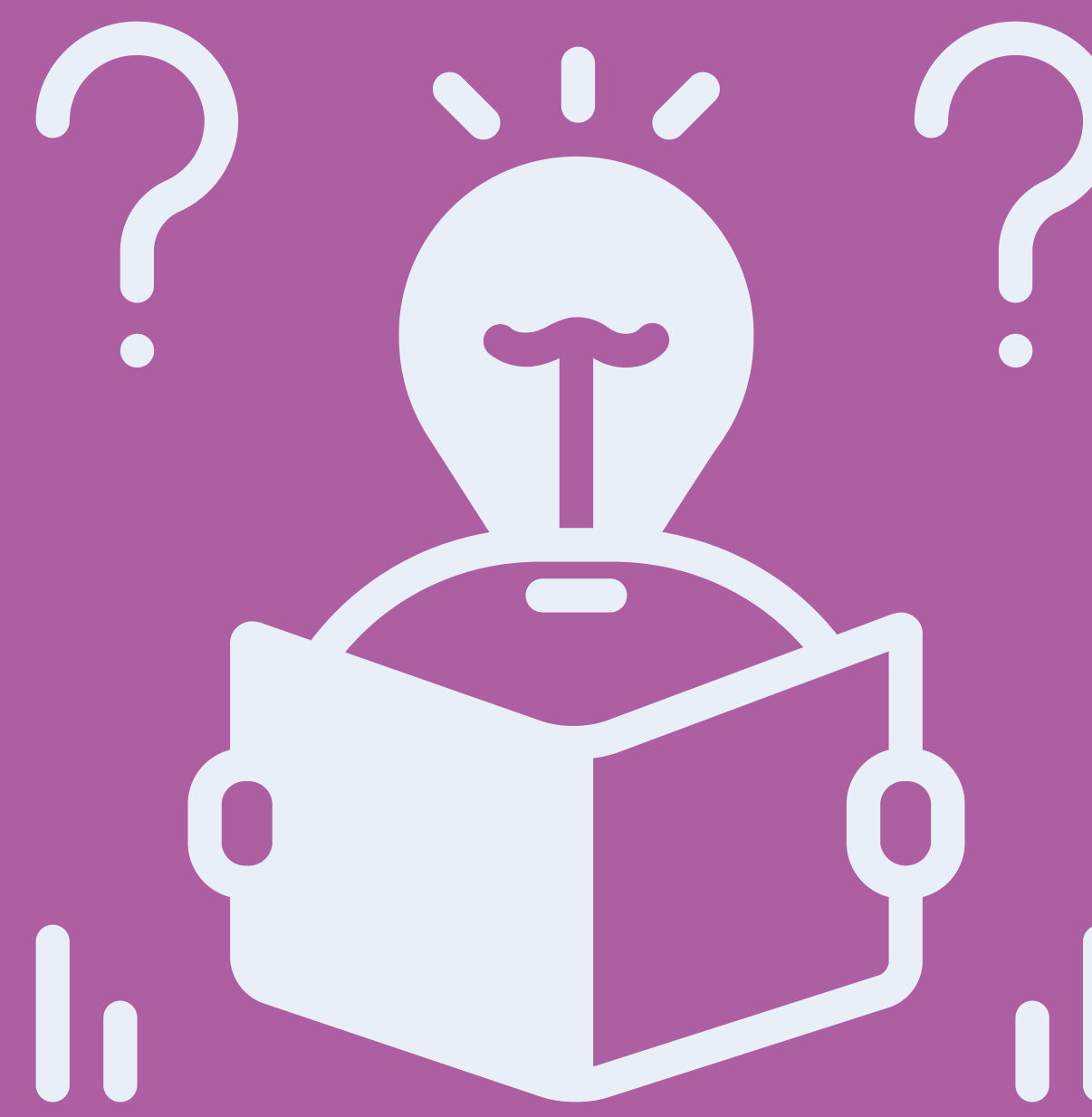
### Retrieval



Drawing out key information from within the text to support comprehension.

4

### Inference



Developing pupils' ability to infer meaning about characters, events and information using evidence to support ideas.

5

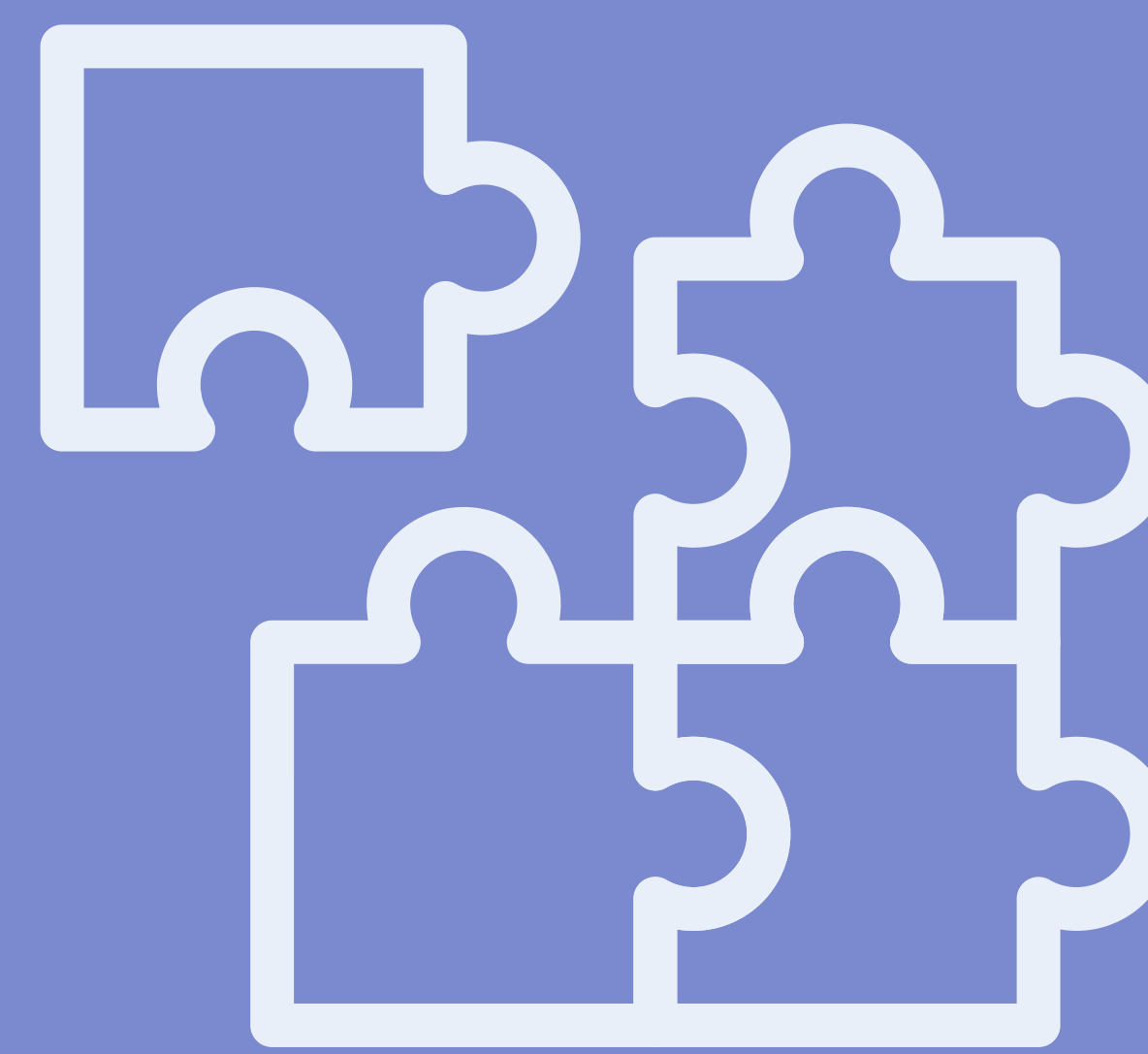
### Word meaning in context



Using context clues from the text to establish the meaning of specific words and phrases.

6

### Mixed practice



Develop additional key reading skills - prediction, summarising, authorial impact, comparing and contrasting.

7

### Assessment



Provide pupils with opportunity to apply all of the reading skills covered within a previously unseen text. Feedback and review in second session to assess proficiency, accuracy and next steps.